

Pinellas County Schools: Teacher Effectiveness Measurement Research Pilot—

Phase II Preliminary Results

Michael Toth, CEO

Elizabeth Kennedy, Senior Staff Developer

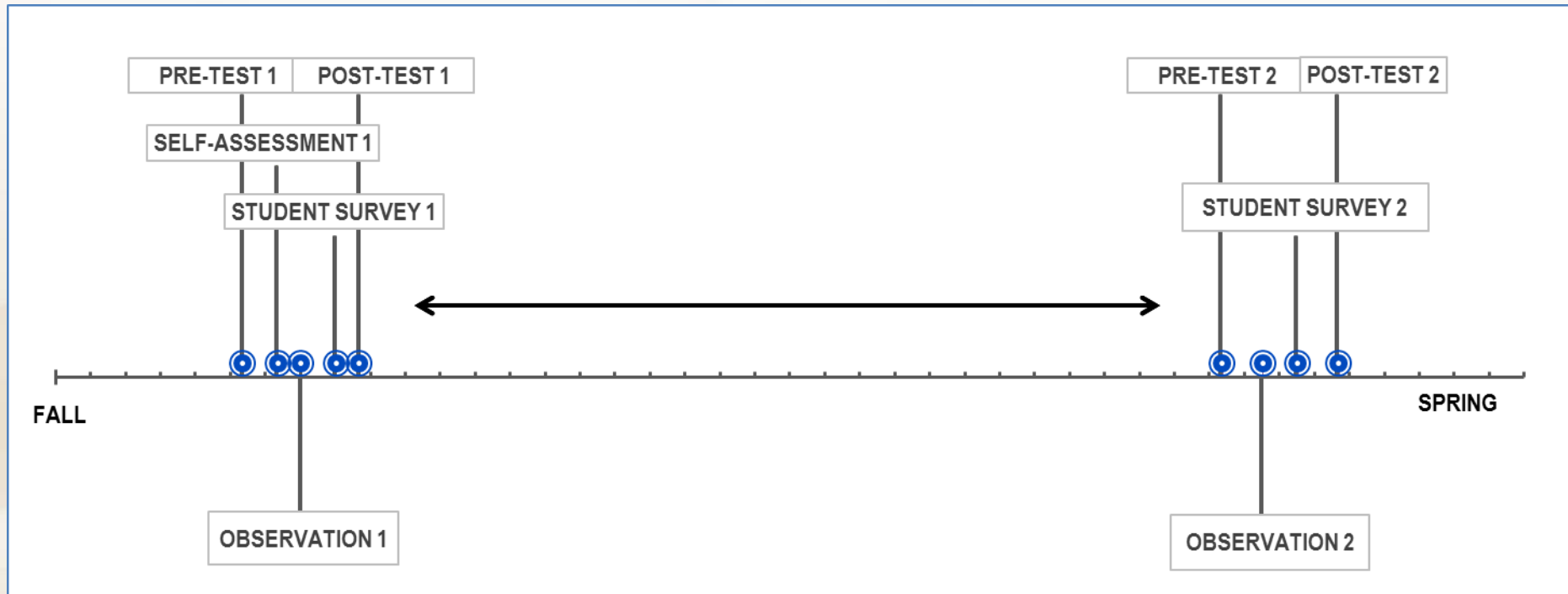
Lindsey Devers, Senior Research Analyst



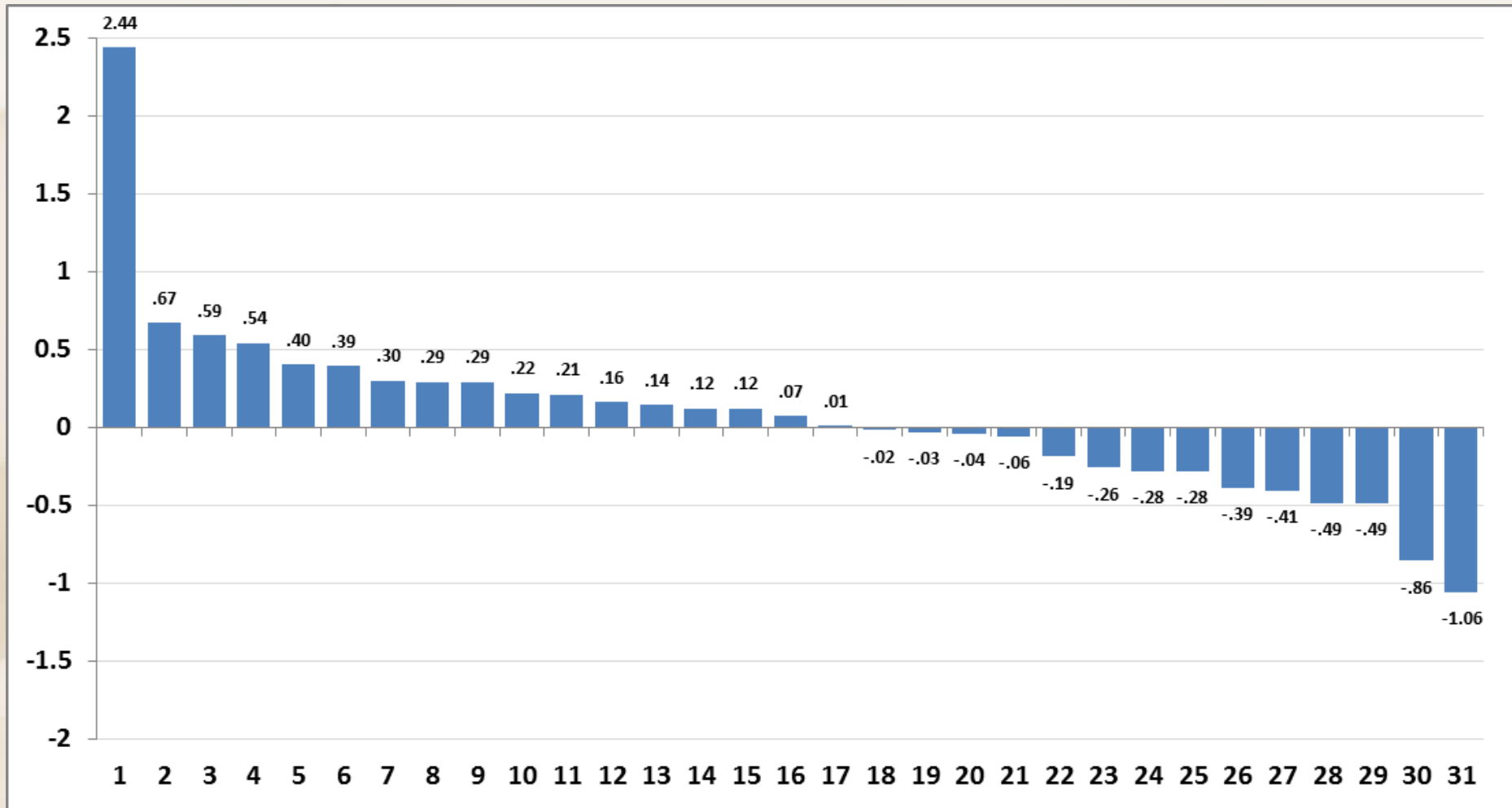
Learning Sciences International

- ✓ Research and development on teacher and leader effectiveness
- ✓ School effectiveness audits
- ✓ Teacher and leader effectiveness and evaluation services
- ✓ School improvement services
- ✓ Located in West Palm Beach, FL

Multiple Measures Timeline

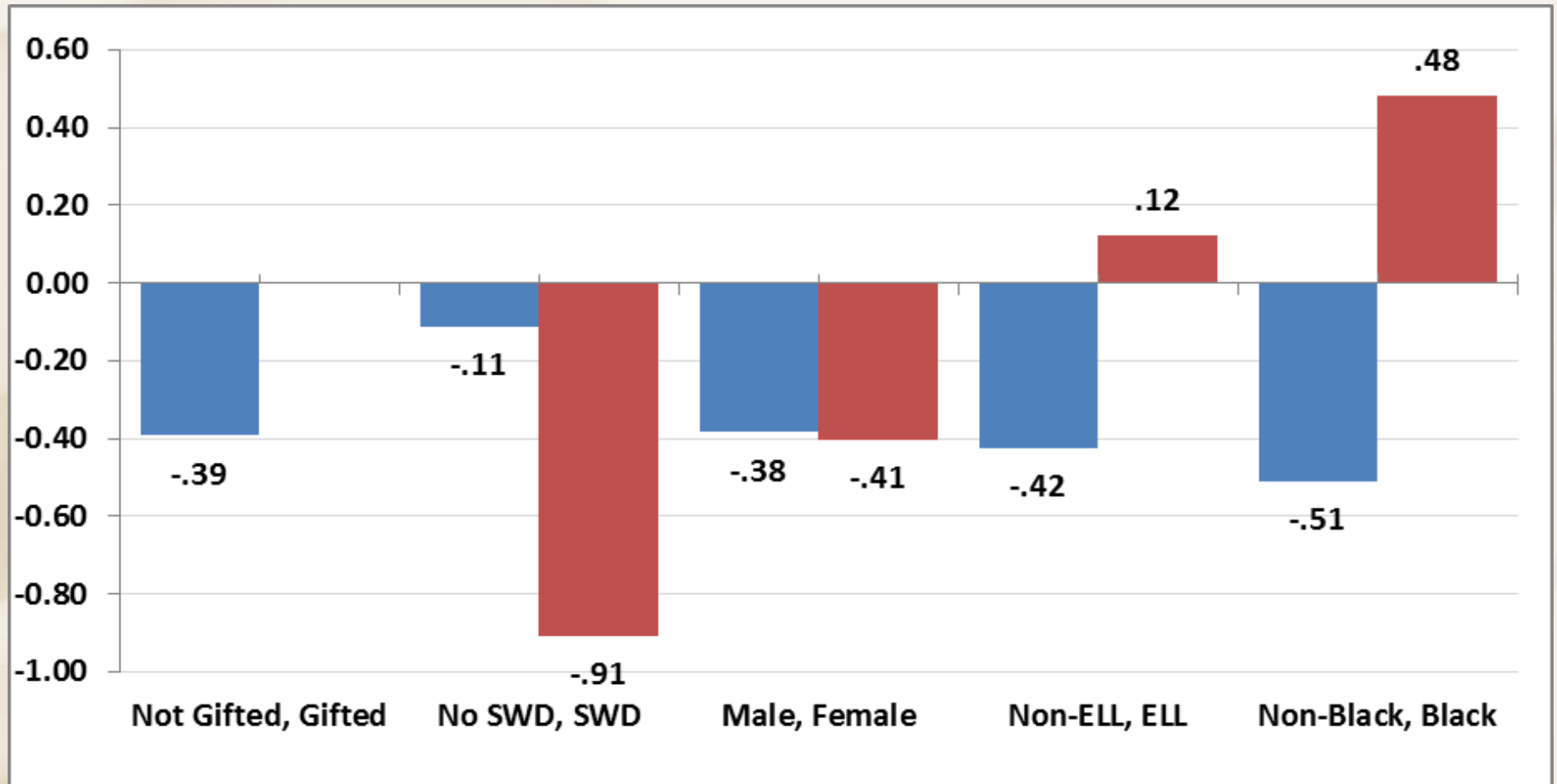


Fourth Grade ELA



- Few students were included in some teacher growth scores
- A minimum number of students to be included in the VAM score should be determined

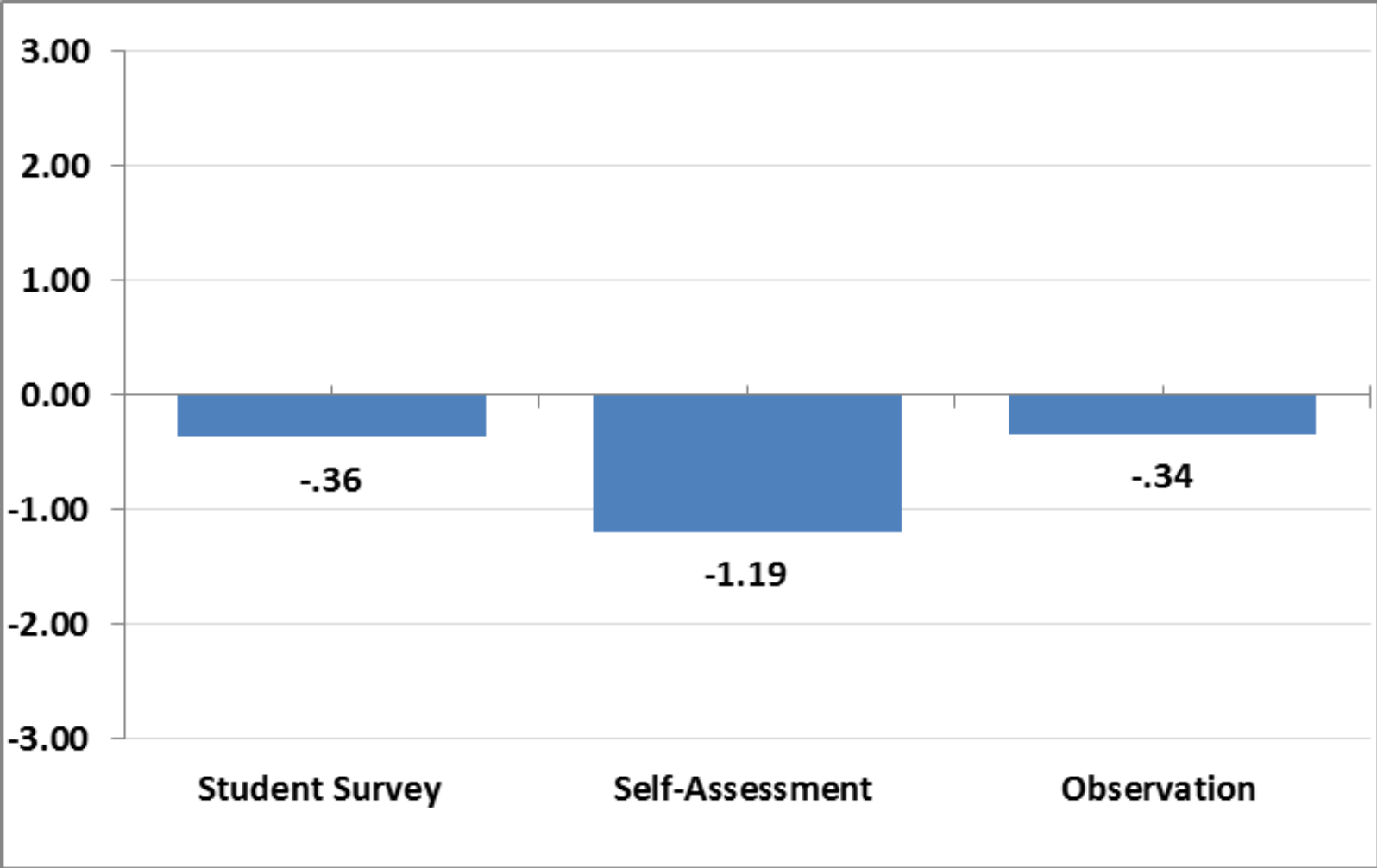
Fourth Grade ELA – Teacher X’s Student Growth Scores (-.39, N=17)



Fourth Grade ELA – Teacher X’s Student Survey Z-Scores (- .07, N=17)



Fourth Grade ELA – Teacher X’s Multiple Measures Z-Scores



Z-score represented here for the student survey represents all students who took the student survey for that teacher. The average noted in the prior demographic chart is the student survey for that particular class.

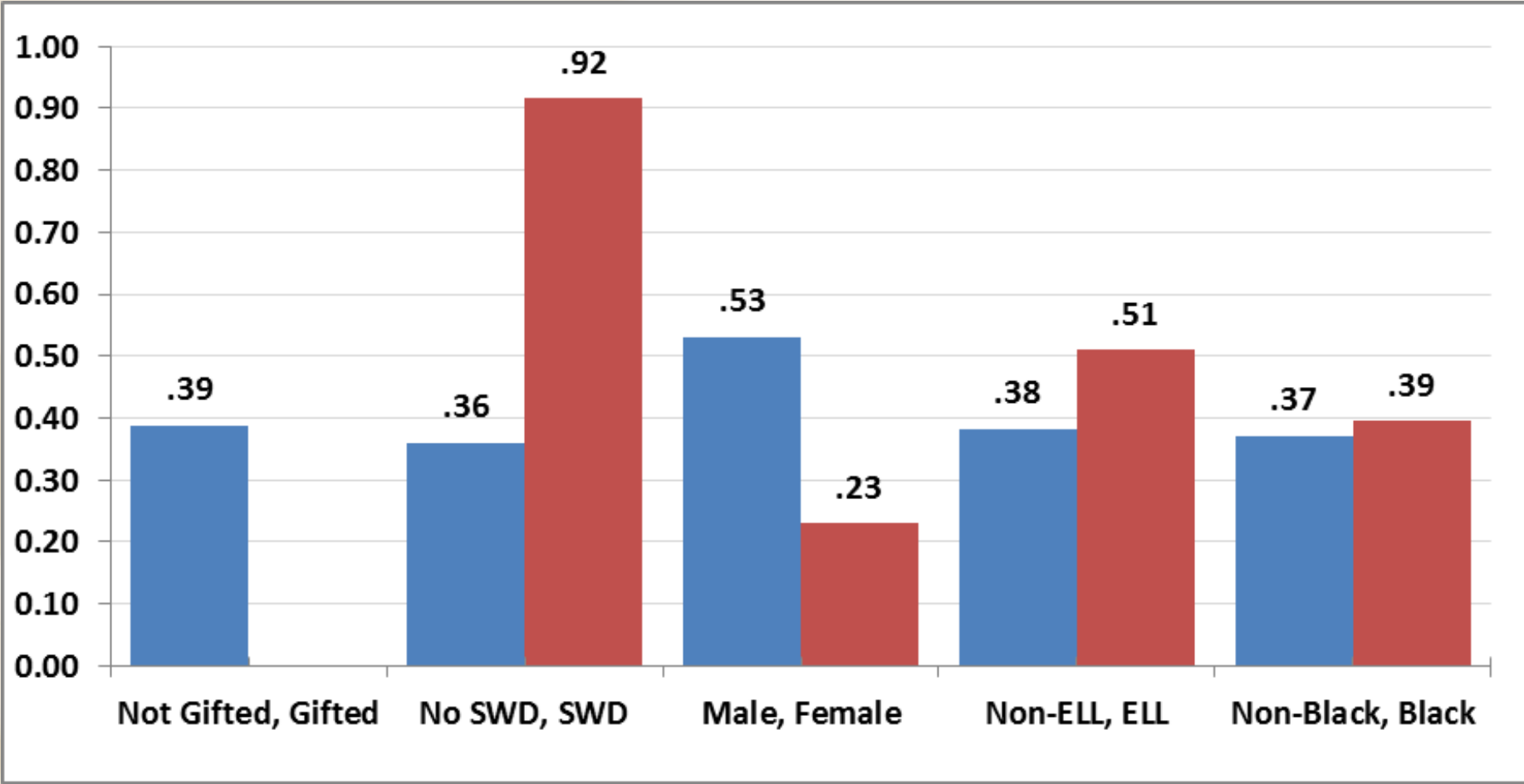
Fourth Grade ELA – Teacher X's Strengths

- Student Survey
 - Element 3: Celebrating Success (3.32)
 - Element 36: Understanding Students' Interests and Background (3.58)
 - Element 19: Practicing Skills, Strategies and Processes (3.32)
- Self-Assessment
 - Element 4: Establishing Classroom Routines (2)
 - Element 24: Noticing When Students are Not Engaged (2)
- Observation
 - Element 4: Establishing Classroom Routines (3)
 - Element 24: Noticing When Students are Not Engaged (3)

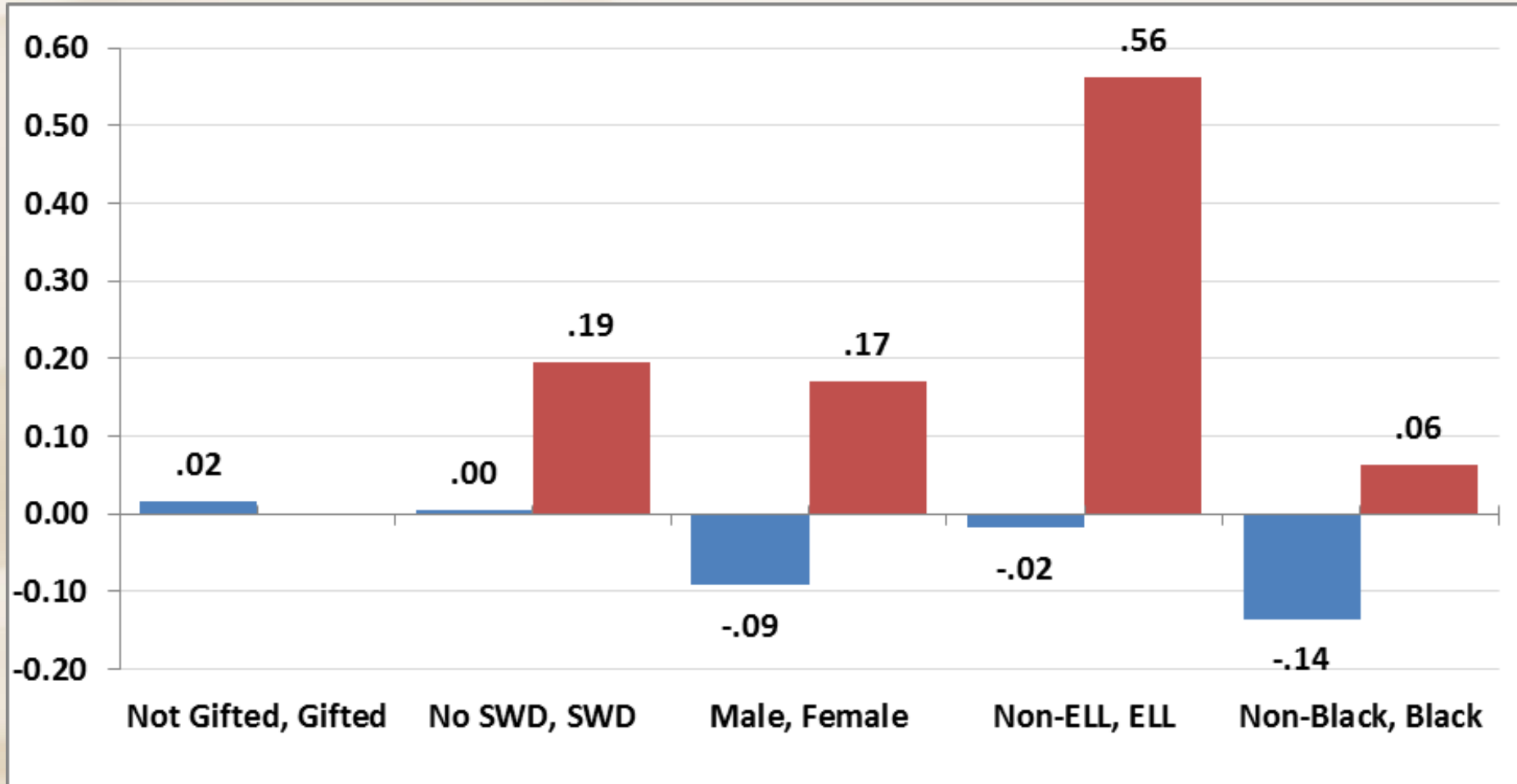
Fourth Grade ELA – Teacher X’s Areas for Growth

- Student Survey
 - Element 1: Providing Clear Learning Goals and Scales (2.5)
 - Element 10: Processing New Information (2.4)
 - Element 11: Elaborating on New Information (2.4)
- Self-Assessment
 - All answers were scored at a 1 except for two elements where the teacher gave themselves a 2 on Element 4 and Element 6.
- Observation
 - Element 1: Providing Clear Learning Goals and Scales (1.5)
 - Element 18: Examining Errors in Reasoning (2.0)
 - Element 19: Practicing Skills, Strategies and Processes (2.0)

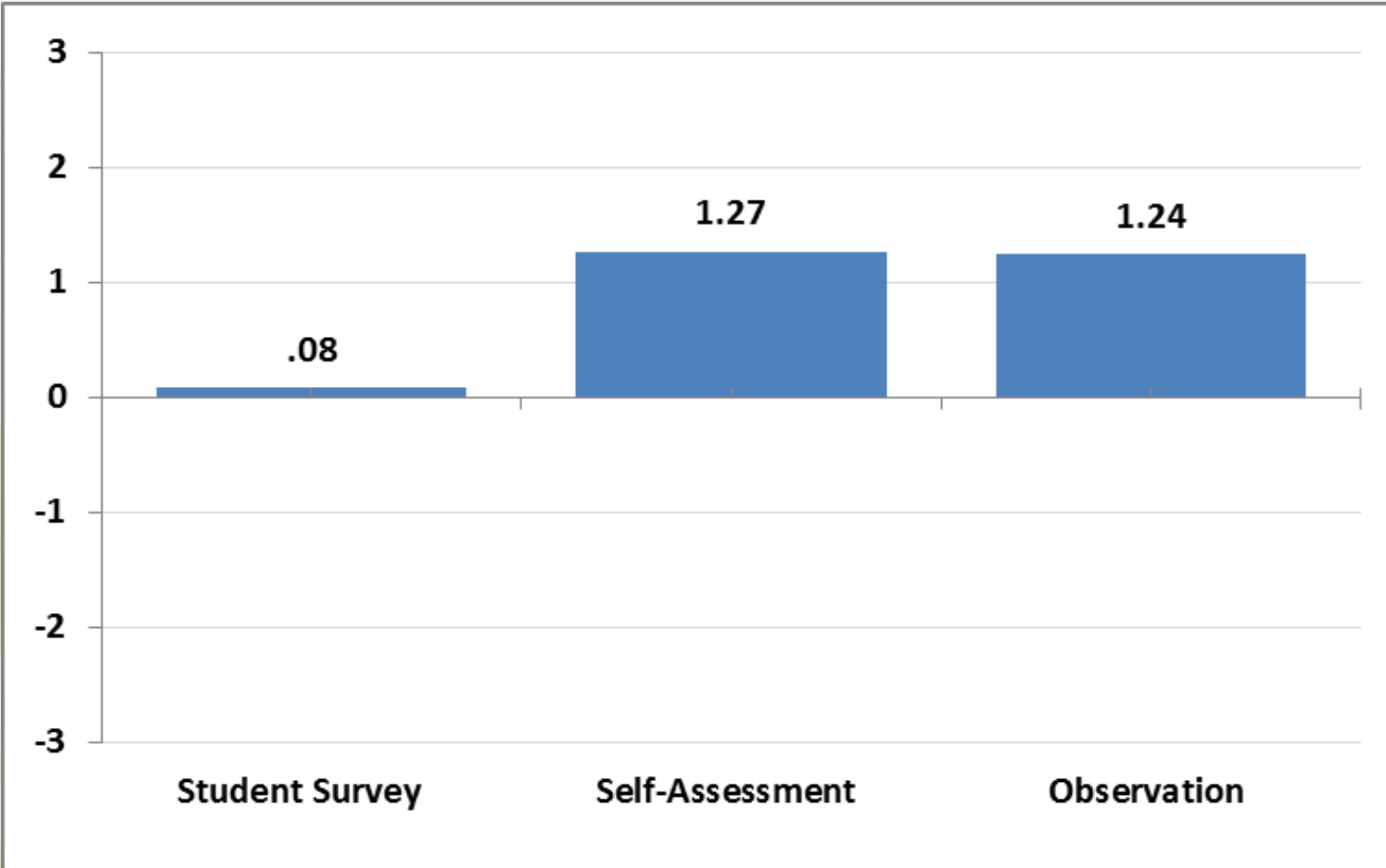
Fourth Grade ELA – Teacher Y’s Students Growth Scores (.39, N=19)



Fourth Grade ELA – Teacher Y’s Student Survey Z-Scores (.02, N=17)



Fourth Grade ELA – Teacher Y’s Multiple Measures Z-Scores



Z-score represented here for the student survey represents all students who took the student survey for that teacher. The average noted in the prior demographic chart is the student survey for that particular class.

Fourth Grade ELA – Teacher Y’s Strengths

- Student Survey
 - Element 36: Understanding Students’ Interests and Background (3.61)
 - Element 26: Managing Response Rates (3.33)
 - Element 24: Noticing when Students are Not Engaged (3.33)
- Self-Assessment
 - All values were a 3 except those noted on following slide
- Observation
 - All values were scored a 4 except those on following slide

Fourth Grade ELA – Teacher Y’s Areas for Growth

- Student Survey
 - Element 2: Tracking Student Progress (2.4)
 - Element 8: Previewing New Content (2.5)
 - Element 17: Examining Errors in Reasoning (2.7)
- Self-Assessment
 - Element 11: Elaborating on New Information (2)
 - Element 18: Examining Errors in Reasoning (2)
- Observation
 - Element 18: Examining Errors in Reasoning (2.0)

Testimonials

“I learned more from my observation post-conference, than I have in all my other years of teaching. I now know exactly what I need to do to improve.”

-Second Grade Teacher

“Thank you for the student survey results! I found this very clear and helpful in determining areas of growth for myself. Thank you for this excellent tool!”

-Fourth Grade Teacher

“The planning process and the creation of goals and scales makes such logical sense. The pilot school teachers are much more focused on teaching to the standards.”

-District Literacy Coach